



GOOD MORNING
Have Good Trading Day

THURSDAY



Price is what you pay.
Value is what you get.

- Warren Buffet



MARKET PLUSE

INDIAN INDICES

NAME	CMP	NET CH.	%
SENSEX	27563	+104	+0.38
NIFTY	8375	+38	+0.46

INDIAN ADR'S

SYMBOL	CLOSE	GAIN/ LOSS %
DRREDDY	58.55	-1.91
HDFCBANK	61.57	+0.16
ICICIBK	9.35	-1.27
INFY	17.00	+0.41
TATAMOTOR	29.21	+1.25
WIPRO	12.29	+0.82

FII AND MF ACTIVITY

SYMBOL	In Crs.
FIIs Eq (Provisional)	-186.24
FIIs Index Future	-1391.29
FIIs Index Options	2031.10
FIIs Stock Future	-191.34
FIIs Stock Options	-13.38
DII's Eq (Provisional)	642.69

CURRENCY

RBI RATE	29-JULY-2015
RUPEE - \$	63.8943
EURO	70.6288
YEN 10	51.7500
GBP	99.7134

MARKET PLUSE

GLOBAL INDICES

NAME	CMP	NET CH.	%
DOW	17751	+121	+0.69
NASDAQ	5116	+27	+0.53
NIKKEI	20578	+275	+1.36
HANG SENG	24715	+95	+0.39
SGX NIFTY	8399	+19	+0.22

WORLD COMMODITIES

FUTURE	U\$\$	CHANGES
CRUDE	48.95	+0.16
NATURAL GAS	2.874	+0.010
GOLD	1093.1	+0.5
SILVER	14.775	+0.032
COPPER	2.4095	+0.0020

WORLD EVENTS

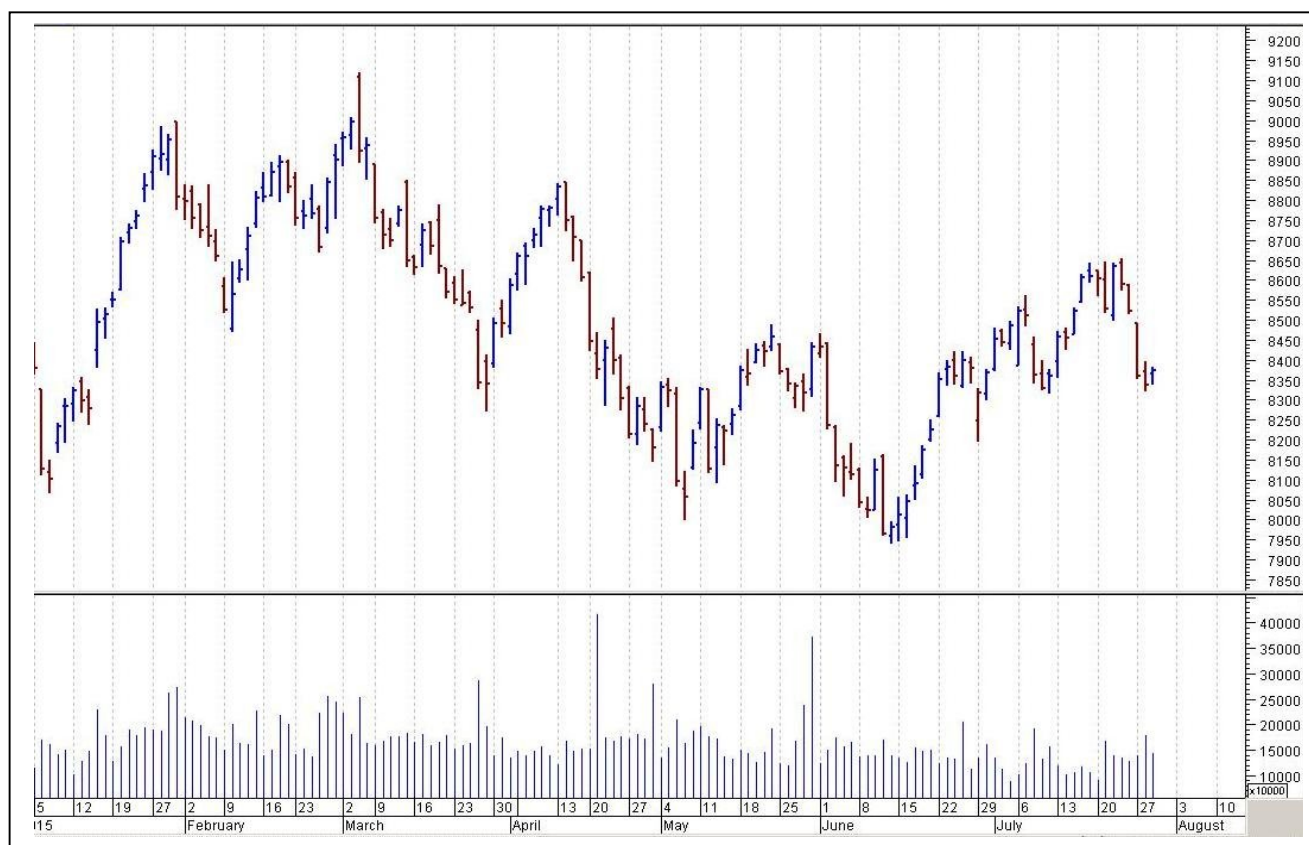
- US: Advance GDP q/q
- Goods Trade Balance
- Unemployment Claims
- UK:NIL

TOP STORY

- Vedanta Q1: Cons Net Profit At `866 Cr Vs `375 Cr (YoY) Cons Total Income Down 1% At `17,017 Cr Vs `17,136.7 Cr (YoY)
- JSW Steel Q1 Cons Net Loss At `107 Cr Vs Profit Of `656 Cr (YoY) Cons Total Income At `11,576.2 Cr Vs `13,254 Cr (YoY)
- Sterlite Technologies to recast telecom vertical into separate business (ET)
- IL&FS Transportation wins `1886 cr NHAI deal in Maharashtra (Exchanges)
- Eveready mulls entering home appliance business (BS) HDFC will raise `5000 cr business expansion
- IndiGo Says In Preliminary Discussions With Qatar Airways To Explore Potential Marketing Arrangements
- Cabinet Approves Amendments To GST Constitutional Amendments Bill
- Cabinet Approves Setting Up Of National Investment & Infra Fund (NIIF)



NIFTY CHART



MARKET COMMENTARY

Snapping four days losing streak, Indian equity benchmarks ended the Wednesday's trade with a gain of around half a percent as investors opted to buy beaten down but fundamentally strong stocks. Domestic gauges traded with volatility but in green throughout the session and ended the session near their intraday highs, recapturing their crucial 8,350 (Nifty) and 27,550 (Sensex) bastion. Some support came with Lok Sabha Speaker Sumitra Mahajan convening an all-party meeting amid continuous disruptions by opposition members, to discuss better functioning of the Lok Sabha, proceedings of which have been virtually washed out in the Monsoon Session so far. For today's trade Nifty likely to trade in the range between 8395 – 8410 in the upper side and 8360 – 8340 in the lower side.

MARKET LEVELS

	CMP	SUPPORT LEVELS				RESISTANCE LEVELS			
NIFTY	8375	8360	8340	8310	8270	8395	8410	8425	8440
USDINR	64.2550	64.18	64.11	64.06	63.96	64.34	64.44	64.54	64.6



FUTURES CORNER

SCRIPS	CLOSE	SUPPORT	TARGET		REMARKS
		STOP LOSS	T1	T2	
LUPIN	1640.3	1630	1658	1675	TRADING CALL
TATAMOTORS	376.55	372	381	385	TRADING CALL
ASHOKLEY	84.65	83	87	89	TRADING CALL

EQUITY CORNER

SCRIPS	CLOSE	SUPPORT	TARGET		REMARKS
		STOP LOSS	T1	T2	
GATI	189	185	198	205	TRADING CALL
IFBAGRO	422.85	410	445	465	TRADING CALL

DELIVERY BASED CALL / INVESTMENT CALL

SCRIPS	CMP	SUPPORT	TARGET		REMARK
		STOP LOSS	T1	T2	

BULK DEALS (BSE)

SCRIP	CLIENT NAME	BUY/SELL	QUANTITY	PRICE
NIL				

BULK DEALS (NSE)

SCRIP	CLIENT NAME	BUY/SELL	QUANTITY	PRICE
ALLSEC	ASHISH DHAWAN	SELL	99744	34

SCRIP'S IN F&O BAN

(To resume for normal trading below 80% of market wide limit required)

AMTEKAUTO, INDIACEM, JINDALSTEL, DISHTV, UNITECH



NIFTY 50 STOCKS: SUPPORT & RESISTANCE						
Symbol	Close	Support 1	Support 2	Pivot Point	Resistance1	Resistance2
ACC	1369.95	1355.03	1340.12	1364.92	1379.83	1389.72
AMBUJACEM	233.55	228.57	223.58	231.73	236.72	239.88
ASIANPAINT	846.85	831.13	815.42	841.97	857.68	868.52
AXISBANK	567.20	563.42	559.63	565.78	569.57	571.93
BAJAJ-AUTO	2497.85	2474.92	2451.98	2494.83	2517.77	2537.68
BANKBARODA	153.20	151.38	149.57	153.07	154.88	156.57
BHARTIARTL	417.65	407.85	398.05	413.90	423.70	429.75
BHEL	283.60	279.23	274.87	282.37	286.73	289.87
BPCL	949.30	938.10	926.90	948.80	960.00	970.70
CAIRN	167.15	164.20	161.25	166.55	169.50	171.85
CIPLA	679.55	669.78	660.02	676.77	686.53	693.52
COALINDIA	420.15	417.57	414.98	420.78	423.37	426.58
DLF	101.55	95.70	89.85	100.05	105.90	110.25
DRREDDY	3712.35	3658.73	3605.12	3721.62	3775.23	3838.12
GAIL	346.60	342.57	338.53	349.13	353.17	359.73
GRASIM	3656.65	3631.87	3607.08	3664.78	3689.57	3722.48
HCLTECH	951.35	933.10	914.85	943.55	961.80	972.25
HDFC	1312.05	1300.70	1289.35	1316.35	1327.70	1343.35
HDFCBANK	1108.35	1102.97	1097.58	1110.43	1115.82	1123.28
HEROMOTOCO	2569.85	2523.77	2477.68	2552.38	2598.47	2627.08
HINDALCO	106.55	105.45	104.35	106.80	107.90	109.25
HINDUNILVR	899.20	891.12	883.03	905.08	913.17	927.13
ICICIBANK	289.25	285.57	281.88	287.73	291.42	293.58
IDFC	154.25	152.82	151.38	153.88	155.32	156.38
INFY	1085.40	1069.60	1053.80	1080.80	1096.60	1107.80
ITC	304.00	299.07	294.13	305.53	310.47	316.93
JINDALSTEL	75.15	74.15	73.15	75.95	76.95	78.75
JPASSOCIAT	8.85	8.53	8.22	9.02	9.33	9.82
KOTAKBANK	725.95	718.97	711.98	728.13	735.12	744.28
LT	1790.30	1760.75	1731.20	1779.60	1809.15	1828.00
LUPIN	1640.10	1605.17	1570.23	1624.98	1659.92	1679.73
M&M	1315.55	1301.37	1287.18	1314.18	1328.37	1341.18
MARUTI	4273.70	4193.43	4113.17	4251.47	4331.73	4389.77
NTPC	135.50	134.20	132.90	135.80	137.10	138.70
ONGC	269.75	265.97	262.18	268.78	272.57	275.38
PNB	137.65	134.38	131.12	138.57	141.83	146.02
POWERGRID	140.00	139.23	138.47	140.27	141.03	142.07
RANBAXY	859.80	822.93	786.07	846.32	883.18	906.57
RELIANCE	996.00	987.83	979.67	1000.27	1008.43	1020.87
RELINFRA	389.25	382.90	376.55	388.35	394.70	400.15
SBIN	253.60	250.37	247.13	255.53	258.77	263.93
VEDL	130.40	127.28	124.17	130.12	133.23	136.07
SIEMENS	1450.80	1404.62	1358.43	1431.18	1477.37	1503.93
SUNPHARMA	829.75	821.58	813.42	827.82	835.98	842.22
TATAMOTORS	376.45	372.78	369.12	376.37	380.03	383.62
TATAPOWER	68.30	66.50	64.70	68.85	70.65	73.00
TATASTEEL	250.55	248.42	246.28	251.53	253.67	256.78
TCS	2506.75	2488.48	2470.22	2501.77	2520.03	2533.32
ULTRACEMCO	3136.50	3093.77	3051.03	3124.33	3167.07	3197.63
WIPRO	564.85	558.53	552.22	563.27	569.58	574.32



CORPORATE ACTION / BOARD MEETINGS

NSE Download Ref.No.:NSE/CML/3028:- Suspension of trading in securities of Company Clutch Auto Limited for non-compliance of certain clauses of Listing Agreementw.e.f 11-Aug-2015

NSE Download Ref No :NSE/FAOP/30304:- Exclusion of Futures and Options contracts on JPPOWER wef September 25, 2015

NSE Download Ref.No.: NSE/CML/30343:-Varun Shipping Company Limited will be suspended from trading w.e.f. July 30, 2015 pursuant to Composite Scheme of Arrangement.

NSE Download Ref.No.: NSE/CML/30372:- Listing of Equity Shares of Adani Transmission Limited pursuant to Scheme of Arrangement wef July 31, 2015

BOARD MEETINGS

COMPANY NAME	DATE	PURPOSE	RS. PER SH.
BOMDYEING	30-Jul-15	Annual General Meeting/ Dividend	0.8
ZUARIGLOB	30-Jul-15	Annual General Meeting/ Dividend	1
ZUARI	30-Jul-15	Annual General Meeting/ Dividend	2
MPSLTD	30-Jul-15	Dividend	7
IBULHSGFIN	30-Jul-15	Dividend	9
IBVENTURES	30-Jul-15	Dividend	1
AVANTIFEED	30-Jul-15	Annual General Meeting/ Dividend	27.5
NELCAST	30-Jul-15	Annual General Meeting/ Dividend	0.7
COSMOFILMS	30-Jul-15	Annual General Meeting/ Dividend	3.5
AUTOAXLES	30-Jul-15	Dividend	1
APARINDS	30-Jul-15	Annual General Meeting/ Dividend	3.5
SUDARSCHEM	30-Jul-15	Annual General Meeting/ Dividend	1.75
APOLLOHOSP	30-Jul-15	Annual General Meeting/ Dividend	5.75
ARVIND	30-Jul-15	Annual General Meeting/ Dividend	2.55
PTL	30-Jul-15	Annual General Meeting/ Dividend	1
IVP	30-Jul-15	Annual General Meeting/ Dividend	2
KAKATCEM	30-Jul-15	Annual General Meeting/ Dividend	2.7
MTEDUCARE	30-Jul-15	Annual General Meeting/ Dividend	2.05
VOLTAMP	30-Jul-15	Dividend	10
LAOPALA	30-Jul-15	Annual General Meeting/ Dividend	1.3
FINCABLES	30-Jul-15	Annual General Meeting/ Dividend	1.8
CADILAHC	30-Jul-15	Annual General Meeting/ Dividend	12

NEWS & RUMOURS:

- Gold (Spot Dollar) major support = \$1071/\$1042 & Resistance = \$1132/\$1150.
- Crude oil range->\$45 to \$55.
- U.S. Equities Advance amid Earnings Reports before Fed Decision: - U.S. stocks advanced, after equities' biggest gain in two weeks, amid better-than-estimated results from Gilead Sciences Inc. to General Dynamics Corp. before the Federal Reserve's decision on monetary policy.
- WTI oil futures turn higher after bullish U.S. supply data: - West Texas Intermediate oil futures reversed losses on Wednesday to trade above the \$48-level after data showed that oil supplies in the U.S. fell much more than expected last week.
- U.S. natural gas futures raise as market awaits storage report: - U.S. natural gas prices rose for the third consecutive session on Wednesday, as market participants looked ahead to fresh weekly information on U.S. gas inventories to gauge the strength of demand for the fuel.
- Copper edges higher after China stocks rally 3.5% :- Copper prices edged higher on Wednesday, as Chinese markets rallied after the previous sessions' broad selloff and as investors eyed the Federal Reserve's upcoming policy statement. Chinese regulators pledged to buy more shares to stabilize markets, while the country's central bank hinted at more policy easing if needed.
- Gold futures struggle below \$1,100 ahead of FOMC statement: - Gold prices struggled below the \$1,100-level on Wednesday, as market players awaited the Federal Reserve's monetary policy statement due later in the session for fresh signals on the timing of a U.S. interest rate hike.

TRENDS & OUTLOOK – DATE: 30- July- 2015

PRECIOUS METALS:

COMMDITY (MCX)	S2	S1	PIVOT POINT	R1	R2
GOLD (Oct)	24420	24650	24966	25270	25666
SILVER (Sep)	31530	32700	33900	35190	36300

BASE METALS

COMMDITY (MCX)	S2	S1	PIVOT POINT	R1	R2
COPPER (Aug)	331	336	342	348	353
ZINC (July)	121.30	123.45	126.30	128.55	131.70
LEAD (July)	104.70	107.10	109.20	111.75	114.10
NICKEL (July)	675	693	718	736	755

ENERGY

COMMDITY (MCX)	S2	S1	PIVOT POINT	R1	R2
CRUDE OIL (Aug)	2950	3030	3125	3275	3365
NATURAL GAS (Aug)	171	177	182	187	192

DATE TALKS : TODAY'S ECONOMIC DATA :

RBA Gov Stevens Speaks, Building Approvals, Advance GDP, Goods Trade Balance, Unemployment Claims, Advance GDP Price Index, Natural Gas Storage.



Registered Office

Indira House, 3rd Floor, 5 Topiwala Lane,
Opp. Lemington Road Police Station, Grant Road (East), Mumbai - 400007.

Corporate Office

'Ramavat House' E-15, Saket Nagar, Indore - 452018 (M.P.)

Customer Care

Tel: +91-731-4097170/ 71/ 72/ 73/ 74 M. +91 93031 72345

Email: customercare@indiratrade.com www.indiratrade.com



INSTITUTIONAL DEALING UNIT

Africa House, 5, Topiwalla Lane, Lamington Road, Mumbai, 400007

Tel: +91 22 30080678 Fax : +91 22 23870767 Email : ie@indiratrade.com

Disclaimer

This report is for private circulation within the Indira Group. This report is strictly confidential and for information of the selected recipient only and may not be altered in any way, transmitted to, copied or distributed, in part or in whole, to any other person or to the media or reproduced in any form. This report should not be construed as an offer or solicitation to buy or sell any securities or any interest in securities. It does not constitute a personal recommendation or take into account the particular investment objectives, financial situations, or any such factor. The information, opinions estimates and forecasts contained here have been obtained from, or are based upon, sources we believe to be reliable, but no representation of warranty, express or implied, is made by us to their accuracy or completeness. Opinions expressed are our current opinions as of the date appearing on this material only and are subject to change without notice.